


# Nisqually Land Trust Mount Rainier Gateway Public Access

## Definitions


- Open: unmaintained trails,  
low-impact activities allowed  
during daylight hours
- Undeveloped: no designated trails,  
low-impact activities allowed  
during daylight hours
- Restricted: closed to public access
- Low-Impact Activities (examples):  
nature study, nature enjoyment,  
and walking / hiking

 Nisqually Community Forest

## Nisqually Land Trust Properties

 Restricted - Sanctuary Areas

 Undeveloped

 Open


 Hunting Allowed: Deer and

 MTTA Hut - Winter Use

 MTTA Ski Trail - Winter Use

## Public Lands

 State Forest

 Pierce County Parks

 National Forest

 Mount Rainier National Park

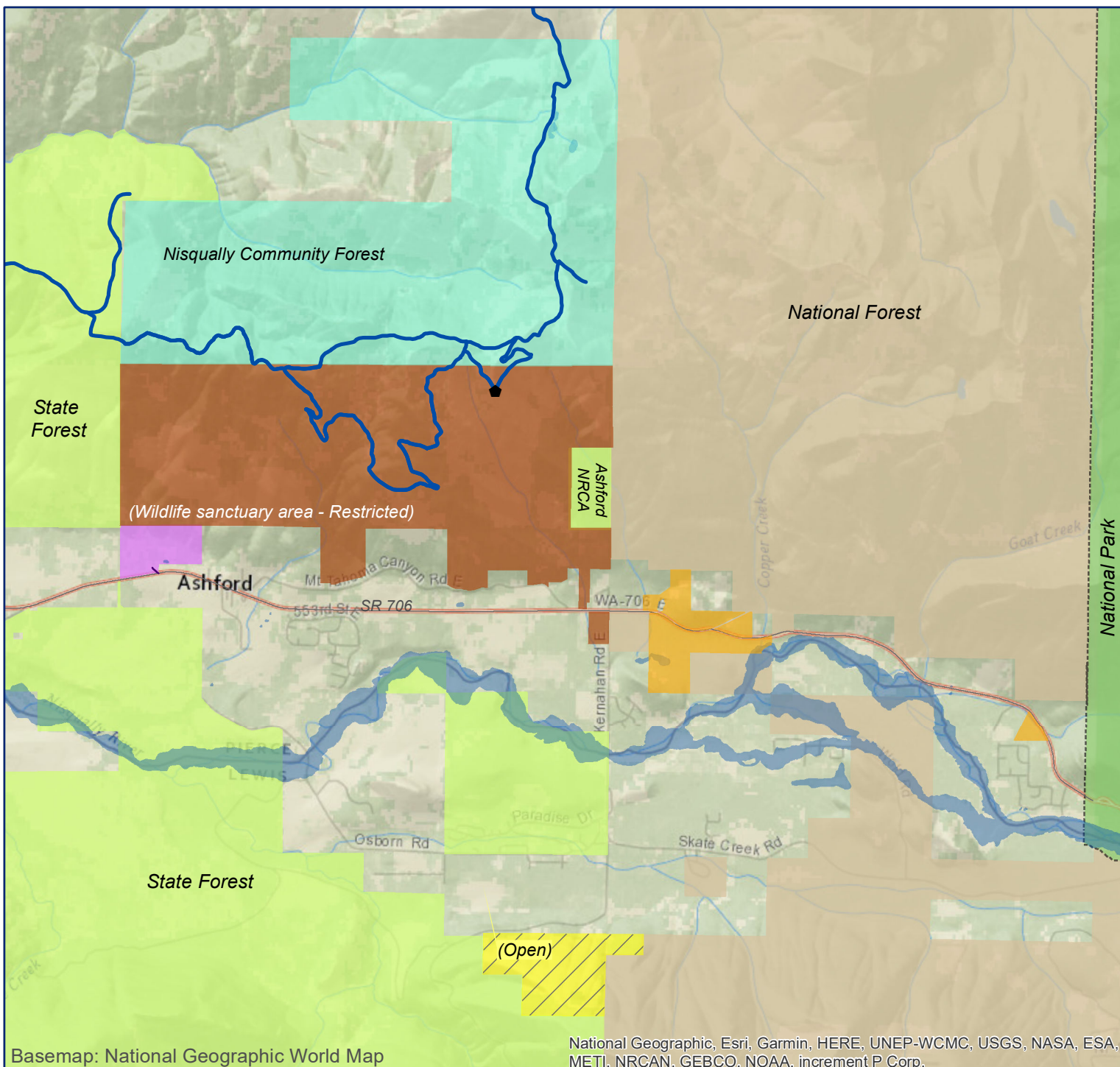
 Nisqually River

(MTTA: Mount Tahoma Trails Association)



May 2021  
Nisqually Land Trust  
Olympia, Washington

360-489-3400  
[nisquallylandtrust.org](http://nisquallylandtrust.org)



Basemap: National Geographic World Map

National Geographic, Esri, Garmin, HERE, UNEP-WCMC, USGS, NASA, ESA, METI, NRCAN, GEBCO, NOAA, increment P Corp.

This map is for information purposes only. The locations of all data and features are approximate and Nisqually Land Trust makes no representation as to their accuracy or completeness.

0 0.5 1 2 Miles





# Nisqually Land Trust Mount Rainier Gateway Lewis County Public Access

## Definitions

Open: unmaintained trails,  
low-impact activities allowed  
during daylight hours

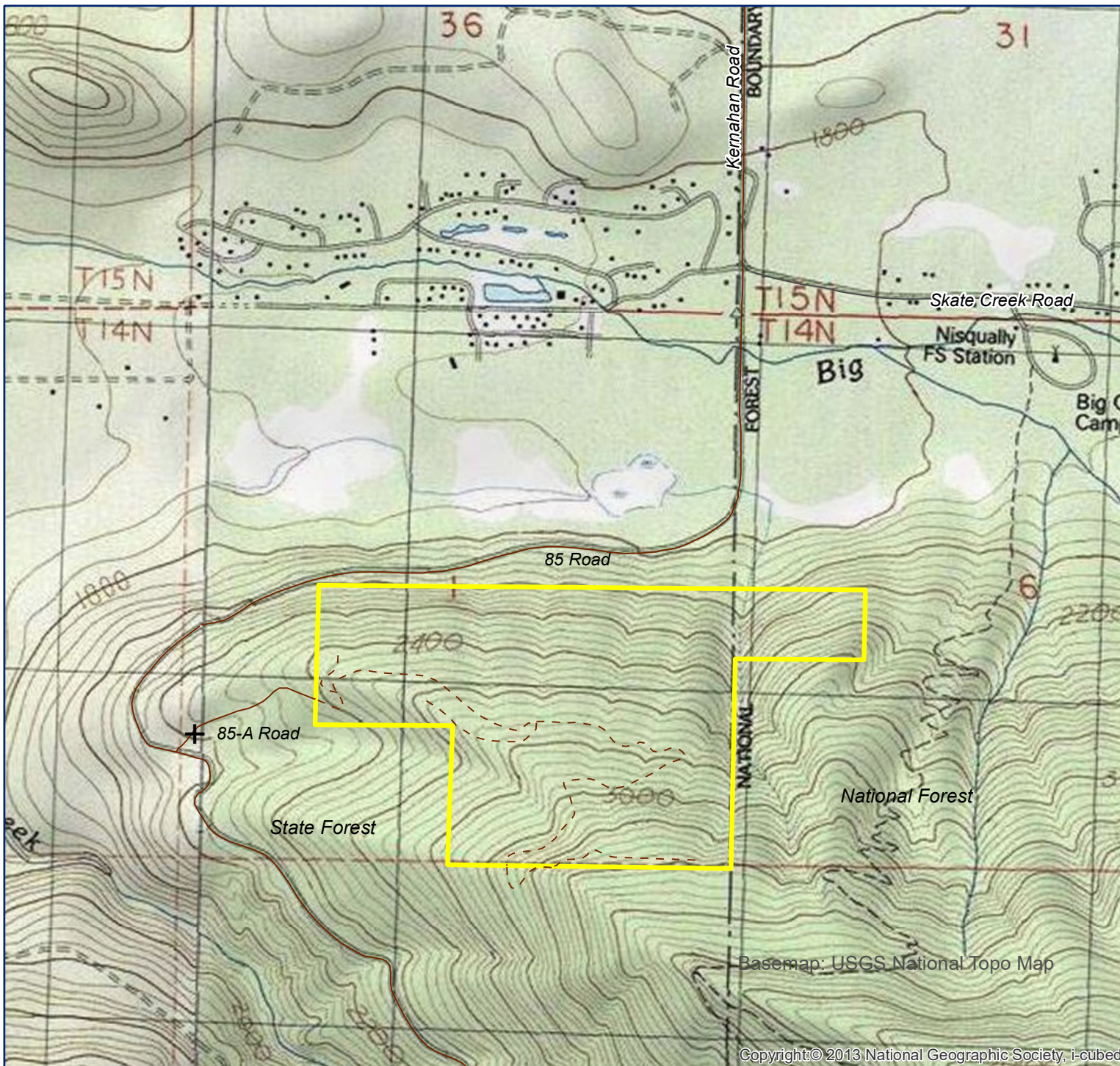
Low-Impact Activities (examples):  
nature study, nature enjoyment,  
walking / hiking

- + Gate - Walk in from here
- - - Unmaintained Trail
- ~ Roads

## Nisqually Land Trust Properties

Open

*Note: Hunting allowed  
during WA State Deer  
and Elk Seasons*



This map is for information purposes only. The locations of  
all data and features are approximate and Nisqually Land Trust  
makes no representation as to their accuracy or completeness.

0 0.25 0.5 1 Miles



April 2018  
Nisqually Land Trust  
Olympia, Washington

360-489-3400  
[nisquallylandtrust.org](http://nisquallylandtrust.org)

Copyright © 2013 National Geographic Society, i-cubed