

# Nisqually Land Trust Middle Reach Nisqually River Public Access

## Definitions

**Open:** unmaintained trails,  
low-impact activities allowed  
during daylight hours

**Undeveloped:** no designated trails,  
low-impact activities allowed  
during daylight hours

**Restricted:** closed to public access

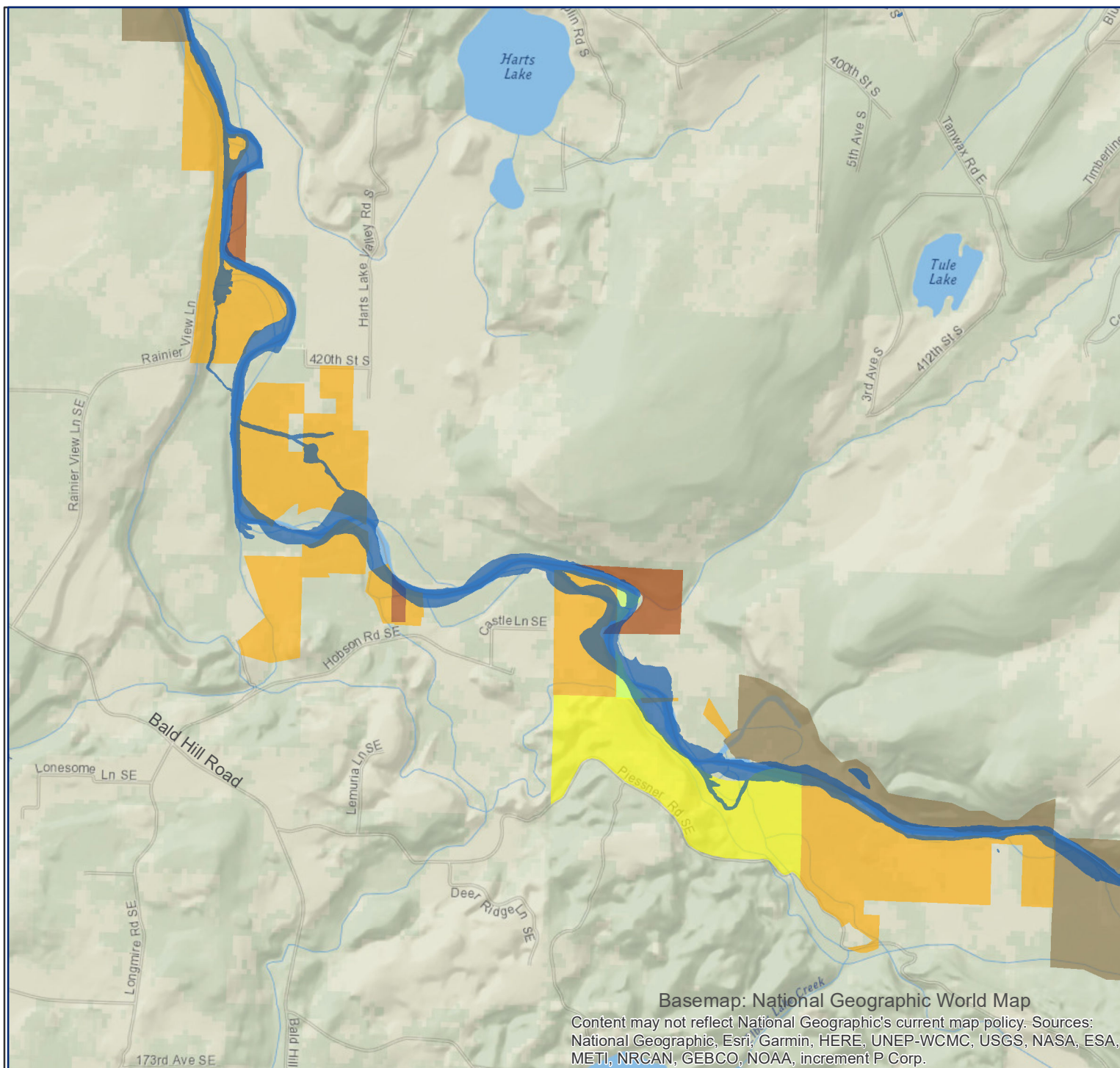
**Low-Impact Activities (examples):**  
nature study, nature enjoyment,  
and walking / hiking

## Nisqually Land Trust Properties

- Restricted
- Undeveloped
- Open

## Public Lands

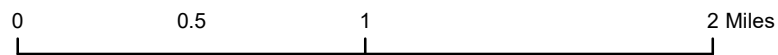
- WA Dept. Natural Resources
- Public Utilities
- Nisqually River



Basemap: National Geographic World Map

Content may not reflect National Geographic's current map policy. Sources:  
National Geographic, Esri, Garmin, HERE, UNEP-WCMC, USGS, NASA, ESA,  
METI, NRCAN, GEBCO, NOAA, increment P Corp.

This map is for information purposes only. The locations of  
all data and features are approximate and Nisqually Land Trust  
makes no representation as to their accuracy or completeness.



May 2020  
Nisqually Land Trust  
Olympia, Washington

360-489-3400  
[nisquallylandtrust.org](http://nisquallylandtrust.org)





# Nisqually Land Trust Powell Creek Protected Area Public Access

## Definitions

Open: unmaintained trails,  
low-impact activities allowed  
during daylight hours

Undeveloped: no designated trails,  
low-impact activities allowed  
during daylight hours

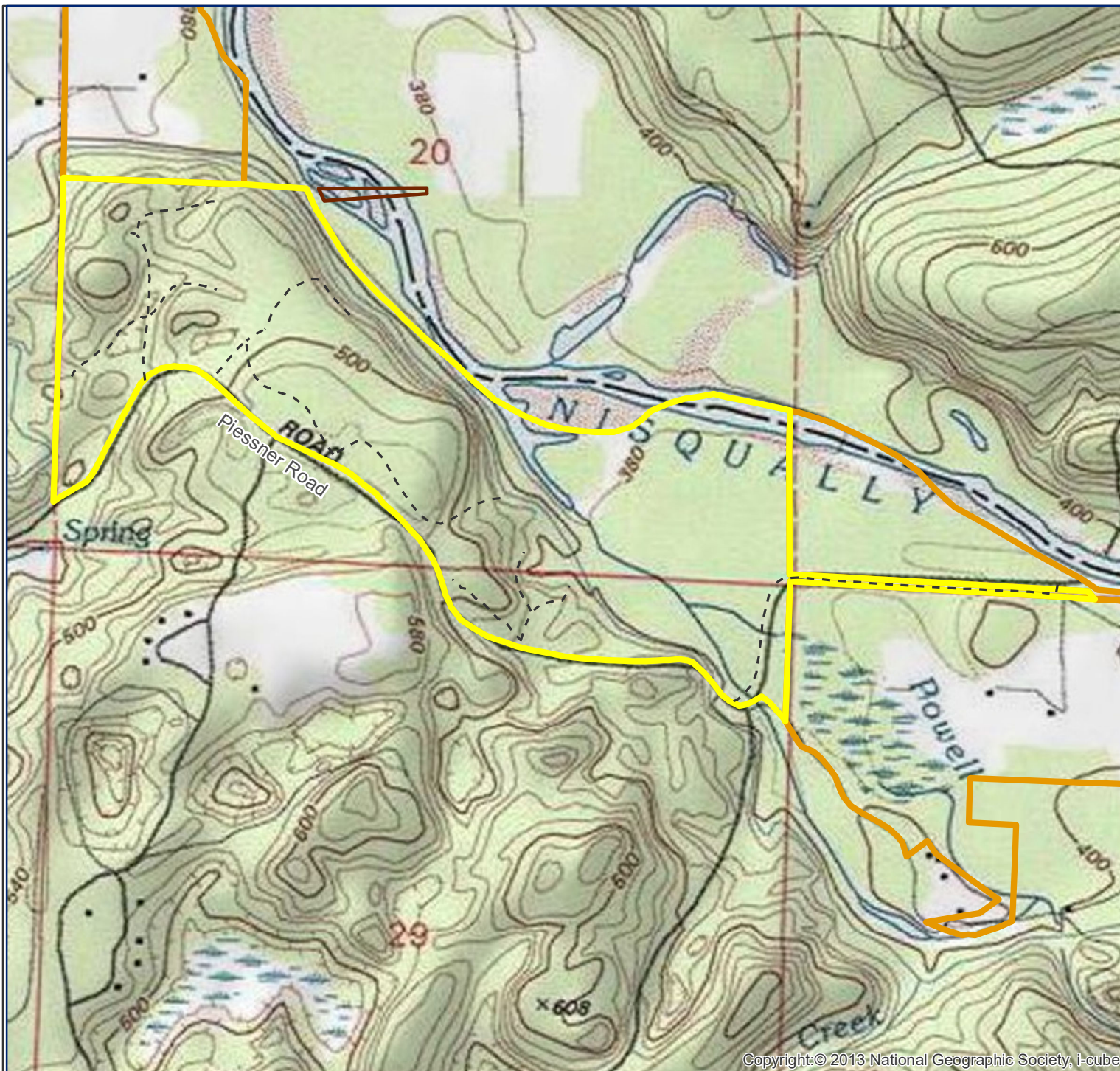
Restricted: closed to public access

Low-Impact Activities (examples):  
nature study, nature enjoyment,  
and walking / hiking

## Nisqually Land Trust Properties

- Open
- Undeveloped
- Restricted
- - - Unmaintained Trails

Note: The trail that crosses  
Powell Creek should only be  
used during low-water conditions.



Copyright:© 2013 National Geographic Society, i-cubed

This map is for information purposes only. The locations of  
all data and features are approximate and Nisqually Land Trust  
makes no representation as to their accuracy or completeness.

0 0.25 0.5 Miles



May 2020  
Nisqually Land Trust  
Olympia, Washington

360-489-3400  
[nisquallylandtrust.org](http://nisquallylandtrust.org)

