



NISQUALLY LAND TRUST

LAND ACQUISITIONS

OCTOBER 2009-SEPTEMBER 2010

COVER: Large Photo: Forest on the Land Trust's most recent acquisition, near Mount Rainier National Park, which will be managed for development of old-growth habitat for threatened northern spotted owls and marbled murrelets. **Inset:** Land Trust partners and volunteers planted 38,000 trees and shrubs to help restore salmon-friendly habitat as part of the re-meandering and restoration of Ohop Creek.

RED SALMON CREEK MANAGEMENT UNIT
41 acres
Acres Acquired October 2009: 3.5



This 3.5-acre acquisition, funded by the Nisqually Environmental Mitigation Trust, protects water quality in Red Salmon Creek, the headwaters of the largest tidal channel in the recently completed multi-million-dollar Nisqually Estuary Restoration Project. A seasonal wetland on the property collects and filters 1-5 run-off, and springs located on the property drain into the creek. About one-third of the land is forest that provides a scenic corridor along I-5.

LOWER REACH MANAGEMENT UNIT
32 acres
Acres Acquired January 2010: 32



The Lower Reach is the Nisqually's eleventh and newest management unit, established thanks to the Blake family's generous donation of 32 acres between Yelm and Joint Base Lewis-McChord. The property includes one-quarter mile

of wild Nisqually River shoreline that provides spawning and rearing habitat for all five species of native salmon, including threatened Chinook.

With this addition, over eight miles – or nearly 80 percent – of the Lower Reach are permanently protected by the Land Trust and its partners, including the military base and the Nisqually Indian Tribe.

MOUNT RAINIER GATEWAY FOREST RESERVE
1940 acres
Acres Acquired April 2010: 600

This purchase, the second-largest in our 21-year history, brings the Land Trust close to completing a permanently protected wildlife corridor between the Gifford Pinchot National Forest and Elbe Hills State Forest, near Mount Rainier National Park. The \$1.96 million purchase



was completed with a grant from the U.S. Fish and Wildlife Service's Cooperative Endangered Species Conservation Fund and a \$130,000 donation from the Nisqually Indian Tribe.

Protection of this land will conserve habitat for northern spotted owls and marbled murrelets—listed as threatened under the Endangered Species Act—and at least nine other species of concern to natural-resource agencies. In addition, the site is located within the viewshed of State Route 706, the main approach to Mount Rainier National Park, and includes a portion of the Mount Tahoma Trails Association's hut-to-hut ski trail system, including the popular Copper Creek ski hut.

YELM SHORELINE MANAGEMENT UNIT
196 acres
Acres Acquired August 2010: 25



Moving quickly to take advantage of a short-sale situation, the Land Trust acquired 25 acres of high-quality salmon habitat along the main stem of the Nisqually River. This acquisition expanded our Yelm Shoreline Management Unit block to 196 acres and nearly two miles of continuously protected shoreline along a reach rated highest priority for protection by the Nisqually Chinook Salmon Recovery Plan. The property includes significant wetlands and had suffered from unpermitted dumping, development and timber harvest. The purchase was funded by a grant from the Salmon Recovery Funding Board that includes funds for site clean-up.

STEWARDSHIP AND RESTORATION

SEPTEMBER 2009-AUGUST 2010

WILCOX FLATS MANAGEMENT UNIT

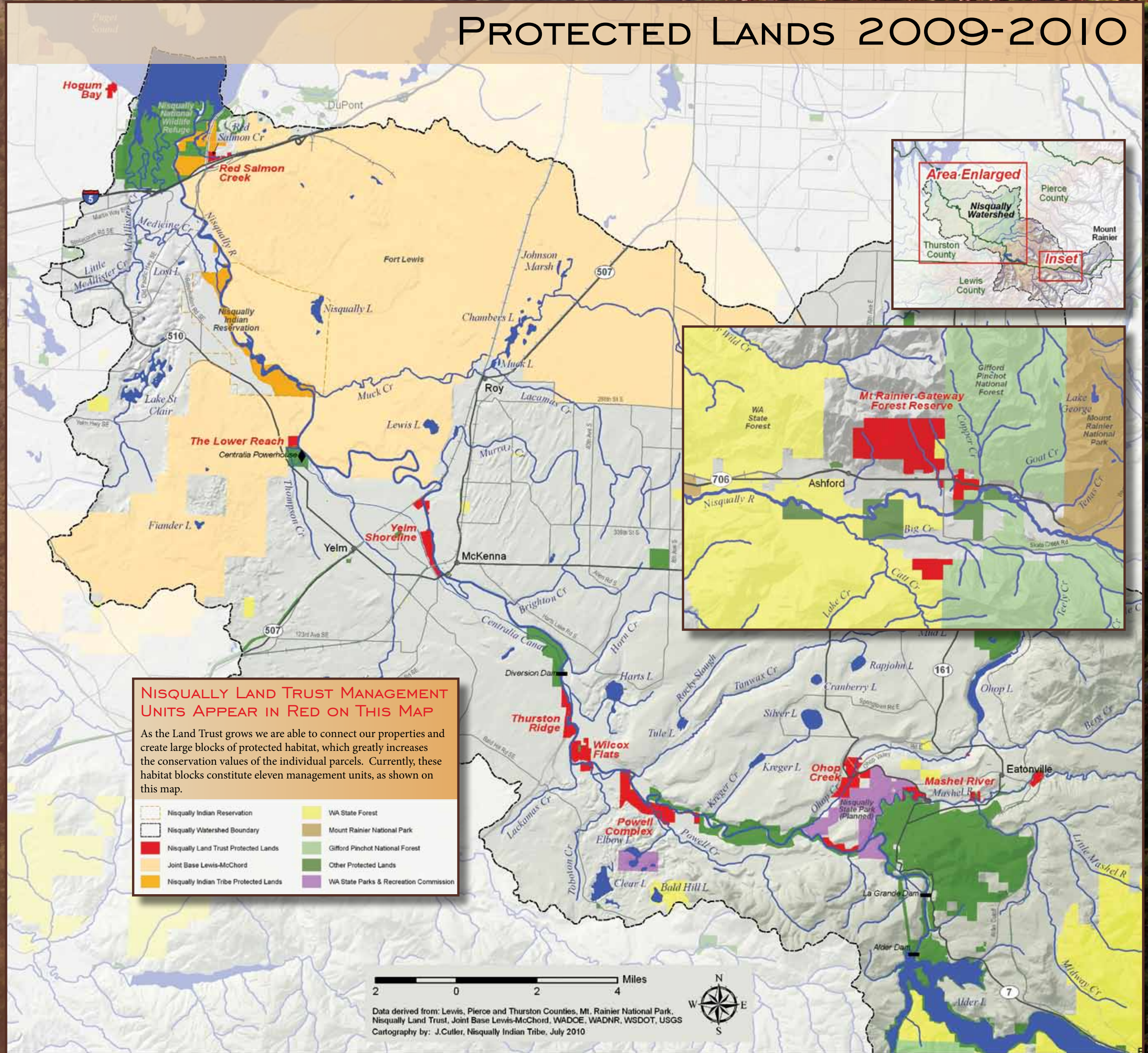
We planted 4,000 trees and shrubs at Wilcox Flats and prepped 13 acres for 2010-11 plantings.

POWELL CREEK COMPLEX

Volunteers initiated our Powell Creek riparian-forest restoration by helping plant 7,600 trees and shrubs, pulling tons of Scot's broom, and prepping 18 acres for 2010-11 plantings.

OHOP CREEK MANAGEMENT UNIT

Over a mile of Ohop Creek, which was converted to a straight ditch in the 1930s, has been rebuilt as a naturally meandering channel with 42 engineered logjams that provide salmon-friendly pools. As part of the project, located entirely on Land Trust property, we planted 28,000 trees and shrubs in the floodplain and 10,000 along the channel and prepped 44 acres for 2010-11 plantings.



CONSERVATION PARTNERS

- Greater Tacoma Community Foundation
- Mount Tahoma Trails Association
- Nisqually Environmental Mitigation Trust
- Nisqually Indian Tribe
- Salmon Recovery Funding Board
- South Puget Sound Salmon Enhancement Group
- Town of Eatonville
- USDA Conservation Reserve Enhancement Program
- U.S. Fish and Wildlife Service
- U.S. Natural Resource Conservation Service
- Washington Conservation Corps
- Washington Department of Fish and Wildlife
- Washington Department of Natural Resources
- Washington Wildlife and Recreation Program



STEWARDSHIP & RESTORATION BY THE NUMBERS

SEPTEMBER 2009 – AUGUST 2010

- Volunteers: 150
- Volunteers Hours: 750+
- Trees and Shrubs Planted: 50,000
- Acres Planted: 78
- Weed Control and Invasive Species Removal: 125 acres
- Prep for 2010-11 Plantings: 62 acres (for 45,000 native trees and shrubs)
- Work Parties: 14