

# Nisqually Land Trust Mount Rainier Gateway Public Access

## Definitions


**Open:** unmaintained trails, low-impact activities allowed during daylight hours


**Undeveloped:** no designated trails, low-impact activities allowed during daylight hours


**Restricted:** closed to public access


**Low-Impact Activities (examples):** nature study, nature enjoyment, and walking / hiking


## Nisqually Land Trust Properties

 Restricted - Sanctuary Areas

 Undeveloped

 Open

 Hunting Allowed: Deer and Elk

 MTTA Hut - Seasonal Use

 MTTA Ski Trail - Seasonal Use


## Public Lands

 State Forest

 Pierce County Parks

 National Forest

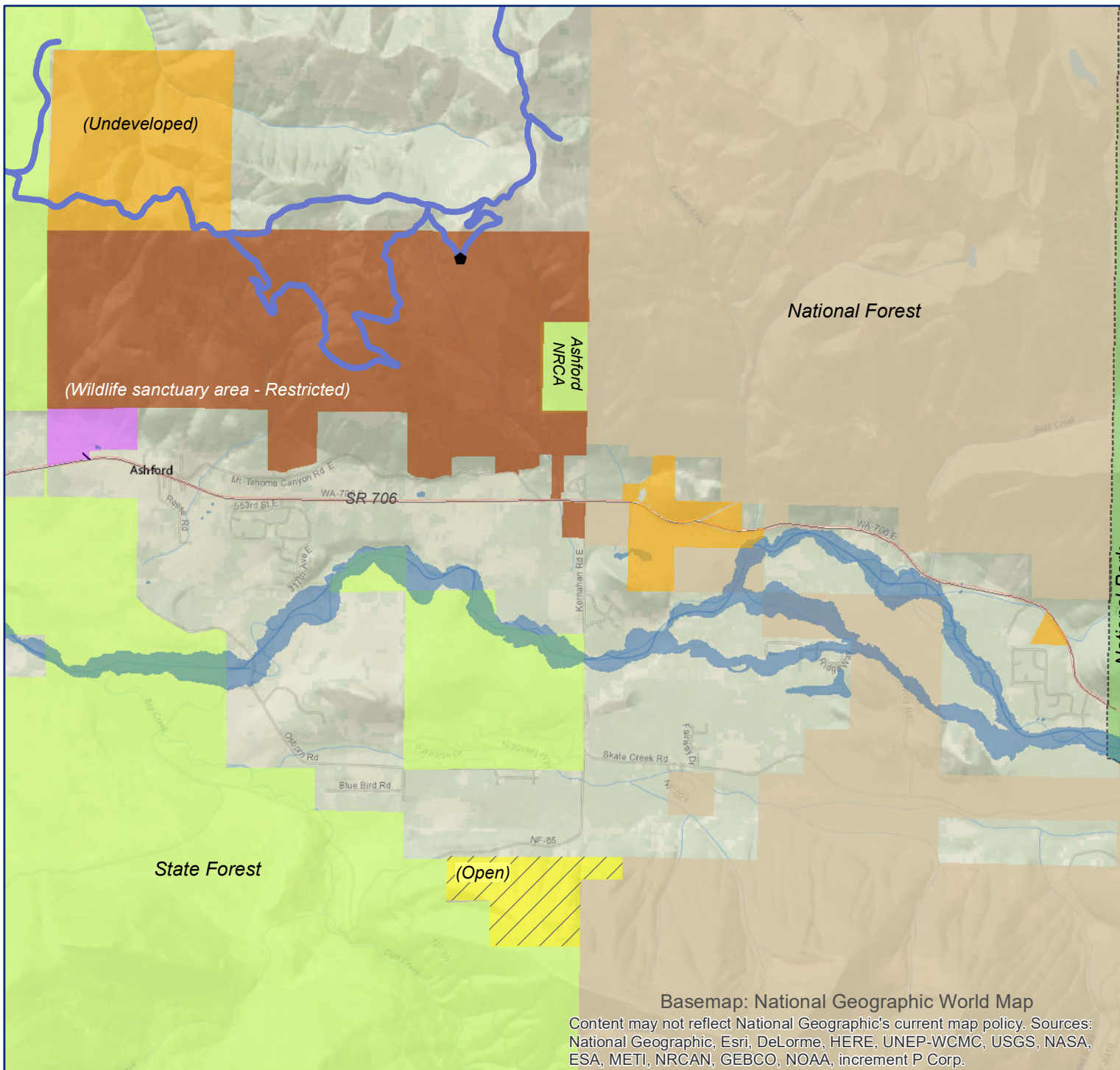
 Mount Rainier National Park

 Nisqually River

MTTA:  
Mount Tahoma Trails Association

June 2017  
Nisqually Land Trust  
Olympia, Washington

360-489-3400  
nisquallylandtrust.org



Basemap: National Geographic World Map

Content may not reflect National Geographic's current map policy. Sources: National Geographic, Esri, DeLorme, HERE, UNEP-WCMC, USGS, NASA, ESA, METI, NRCAN, GEBCO, NOAA, increment P Corp.

This map is for information purposes only. The locations of all data and features are approximate and Nisqually Land Trust makes no representation as to their accuracy or completeness.

0 0.5 1 2 Miles





# Nisqually Land Trust Mount Rainier Gateway Lewis County Public Access

## Definitions

Open: unmaintained trails,  
low-impact activities allowed  
during daylight hours

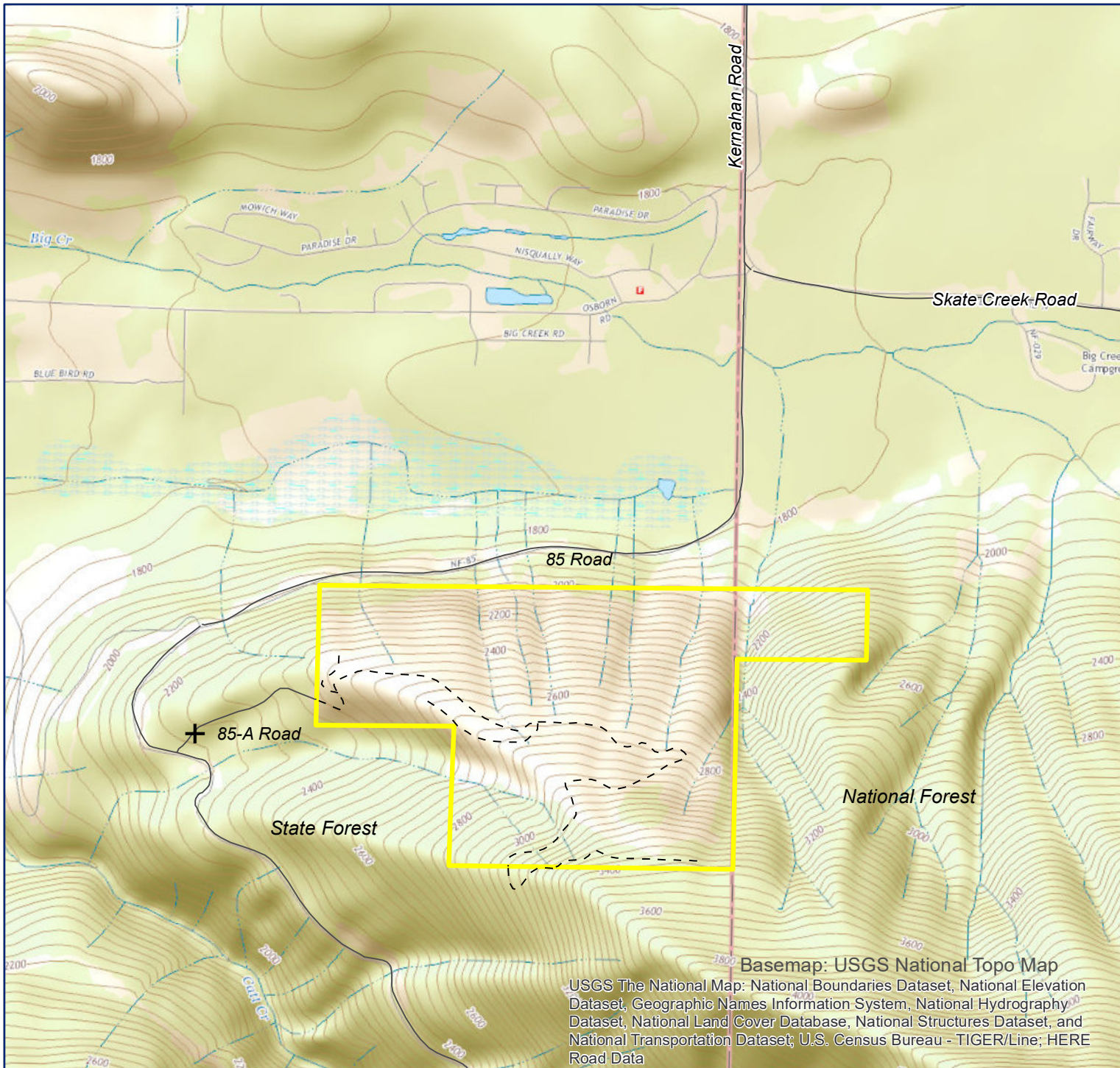
Low-Impact Activities (examples):  
nature study, nature enjoyment,  
walking / hiking

- + Gate - Walk in from here
- - - Unmaintained Trail
- ~ Roads

## Nisqually Land Trust Properties

Open

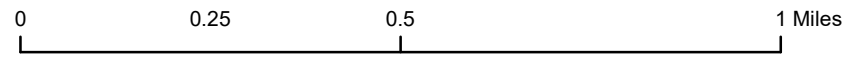
*Note: Hunting allowed  
during WA State Deer  
and Elk Seasons*



Basemap: USGS National Topo Map

USGS The National Map: National Boundaries Dataset, National Elevation Dataset, Geographic Names Information System, National Hydrography Dataset, National Land Cover Database, National Structures Dataset, and National Transportation Dataset; U.S. Census Bureau - TIGER/Line; HERE Road Data

This map is for information purposes only. The locations of all data and features are approximate and Nisqually Land Trust makes no representation as to their accuracy or completeness.



June 2017  
Nisqually Land Trust  
Olympia, Washington

360-489-3400  
nisquallylandtrust.org

